

BELVERDERE SLOUGH, SL1 2SJ

Welcome to this charming duplex maisonette located in the desirable Belvedere Mansions, Clive Court, Slough. This delightful property offers a perfect blend of comfort and convenience, making it an ideal choice for families or professionals seeking a spacious home.

Upon entering, you will find a welcoming reception room that provides a warm

£1,650 PCM



1

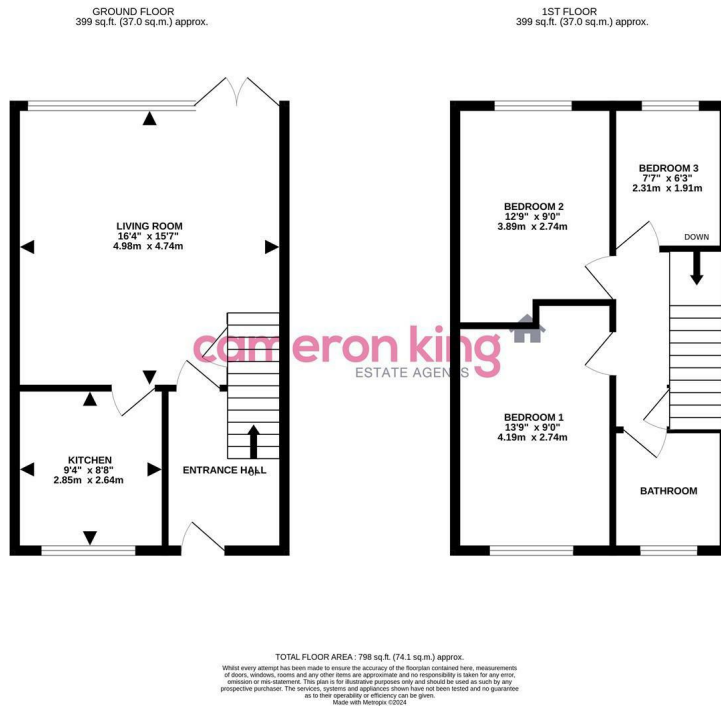


1



3

EPC D



and inviting atmosphere, perfect for relaxation or entertaining guests. The maisonette boasts three well-proportioned bedrooms, each offering ample space and natural light, ensuring a restful environment for all occupants. The property also features a modern bathroom, designed with functionality in mind.

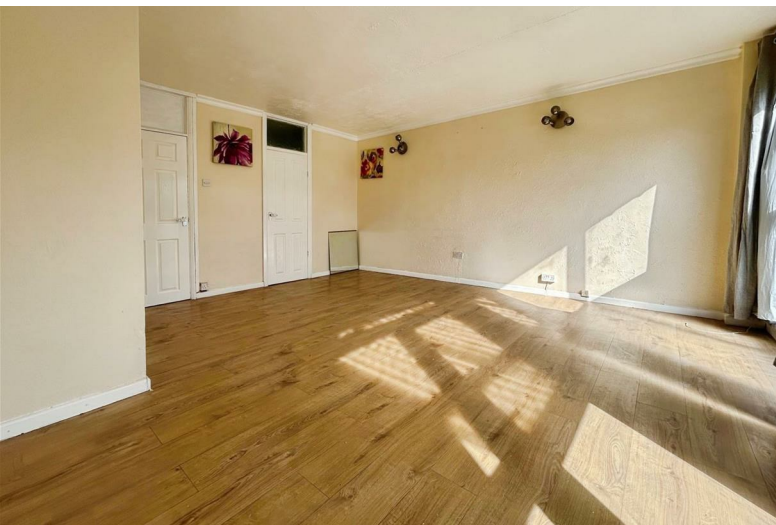
One of the standout features of this property is the availability of parking for two vehicles, a rare find in such a central location. This added convenience allows for easy access to the surrounding area and beyond.

The maisonette is available for rental now, with a flexible 12-month tenancy that includes a 6-month break clause, providing peace of mind for those who may require a change in circumstances.

Situated in Slough, this property benefits from excellent transport links, local amenities, and green spaces, making it a fantastic place to call home. Whether you are commuting to work or enjoying leisure activities, everything you need is within easy reach.

Do not miss the opportunity to make this lovely maisonette your new home. Contact us today to arrange a viewing and experience all that this property has to offer.

- Available Now
- Easy access to M4 Motorway (Junction 6)
- Close to local shops
- 0.8 miles from Slough Town Centre and Mainline Train Station
- Single garage with off street parking
- 0.1 miles from Grove Academy
- Communal gardens
- 6 Month Break Clause



411 Bath Road, Slough, SL1 5QL
t: 01628 667442
e: sales@cameronking.co.uk

